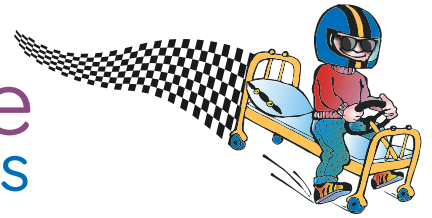


SATURDAY,
OCTOBER 12, 2024
600 SE FLAGLER AVE.
STUART, FL

5TH ANNUAL
Family Promise
of Martin County **Bed Races**



BED CONSTRUCTION GUIDELINES

1. Bed must not be higher than 8 feet. For safety reasons, we encourage sturdy frames.
2. Beds must be twin size or larger and include a box spring, mattress or both. *No air mattresses.*
3. Push bars (handles) are allowed, but may not extend more than 16 inches away from the bed frame. They must be designed for safety with no sharp or jagged edges allowed.
4. Beds must have four wheels. All four wheels must have contact on the ground at the finish line. All wheels must be load-bearing and functional but do not have to be the same size.
5. Steering mechanisms may be used. No bed may have motorized or mechanical means of motion. All means of motion shall be limited to race team members.



Questions related to bed construction
may be emailed to:

events@MCFamilyPromise.org